

Classroom Select[®] Science Tables

Non-Chem Res. Laminate Table



Epoxy Top w/Bookboxes Table



Built to last, Classroom Select[®] Science Tables are extra-durable, provide ample workspace, optional built-in book box storage, and safe use in any science lab or STEM activity-driven classroom. Available in a variety of heights, sizes, with or without casters, and countertop surfaces ranging from scratch-resistant laminates to heavy-duty heat- and chemical-resistant phenolic resin or epoxy resin, this science table is an indestructible asset for anatomy specimen work, chemistry labs, and any hands-on experimentation in between.



FEATURES

- Solid Parawood tables are constructed from an eco-friendly, renewable, and sustainable hardwood
- Available in multiple sizes and leg heights to customize your space
- Custom sizes are available upon special request
- Table legs have eased corners for safety
- Black vinyl leg boots protects legs from accidental spills
- Adjustable nylon glides are standard. Optional locking casters are available
- Dual book boxes are available as an option
- Apron cut-out is available to allow additional leg room
- Durable, black powdercoat legs and frame
- Easy to clean laminate tops with soap, water, and an optional diluted bleach solution

SPECIFICATIONS

CONSTRUCTION

- Apron is made of $\frac{3}{4}$ " x 5" solid hardwood
- Solid hardwood legs are $2\frac{1}{4}$ " x $2\frac{1}{4}$ " thick
- Dual bolt bracket assures table is secure and wobble-free
- Optional 2" heavy-duty locking casters

HIGH-PRESSURE LAMINATE TOP: (SEE FIG. A BELOW)

- Wears exceptionally well under normal use
- Offers superior resistance to scratching, with limited resistance to high temperatures and severe chemicals
- Edges are finished with vinyl T-mold edge banding

CHEMGUARD TOP: (SEE FIG. A BELOW)

- A durable, chemical resistant grade of high pressure laminate
- Edges are finished with 3mm PVC molding, sealed with heat sensitive adhesive to create and attractive waterproof and durable edge

SPECIFICATIONS (CONTINUED)

PHENOLIC RESIN TOP: (SEE FIG. B BELOW)

- ¾" thick Phenolic composite tops are thermo fused under heat and pressure to form a solid black chemical resistant surface
- Top will not stain or etch when exposed to most chemicals or solvents
- Exposed edges and corners are finished with a 1/8" bevel
- Not recommended for use with high temperatures

EPOXY RESIN TOP: (SEE FIG. C BELOW)

- 1" thick solid Epoxy top is impervious to normal laboratory chemicals and heat
- Its monolithic composition eliminates the possibility of swelling, lamination issues and exposure of the substrate
- Exhibits no effect when subjected to most common laboratory chemicals



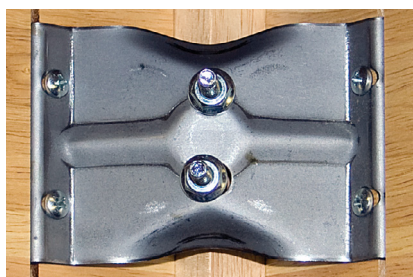
Black Vinyl Leg Boot



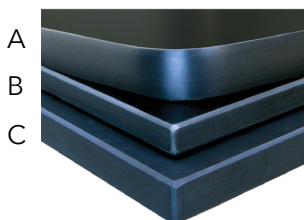
Standard Adjustable
Glides



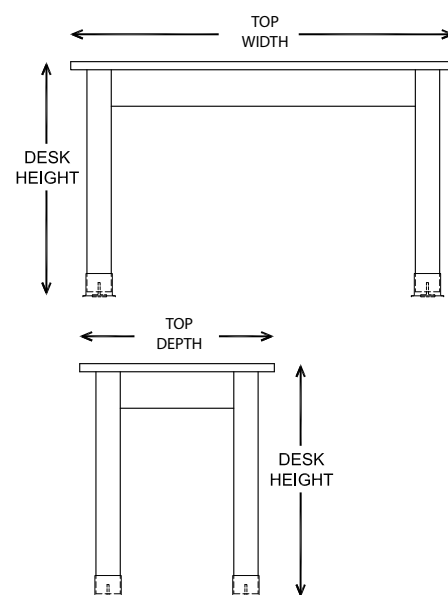
Optional 2" Heavy-Duty
Hard-Plastic Locking
Casters



Secure Dual Bolt Leg Attachment
Assures Extra Safety and Durability



- A. Chemsurf & HPL Laminate
 B. ¾" thick Phenolic Composite
 C. 1" thick Solid Epoxy



MODELS

MODEL	ITEM #	WIDTH X DEPTH X HEIGHT (IN)
Non-Chem Res. Laminate		
Non-Chem Res. Laminate	657673	48 x 24 x 30
Non-Chem Res. Laminate	657674	54 x 24 x 30
Non-Chem Res. Laminate	657675	60 x 24 x 30
Non-Chem Res. Laminate	1290056	60 x 30 x 30
Non-Chem Res. Laminate	1487342	48 x 24 x 36
Non-Chem Res. Laminate	1361616	54 x 24 x 36
Non-Chem Res. Laminate	1552584	60 x 24 x 36
Non-Chem Res. Laminate	1552585	60 x 30 x 36
Non-Chem Res. Laminate w/ Bookboxes		
Non-Chem Res. Laminate w/ Bookboxes	672461	48 x 24 x 30
Non-Chem Res. Laminate w/ Bookboxes	672462	54 x 24 x 30
Non-Chem Res. Laminate w/ Bookboxes	672463	60 x 24 x 30
Non-Chem Res. Laminate w/ Bookboxes	1552589	60 x 30 x 30
Non-Chem Res. Laminate w/ Bookboxes	1552590	48 x 24 x 36
Non-Chem Res. Laminate w/ Bookboxes	1367770	54 x 24 x 36
Non-Chem Res. Laminate w/ Bookboxes	1552591	60 x 24 x 36
Non-Chem Res. Laminate w/ Bookboxes	1552592	60 x 30 x 36
ChemGuard Top		
ChemGuard Top	657677	48 x 24 x 30
ChemGuard Top	568157	54 x 24 x 30
ChemGuard Top	568160	60 x 24 x 30
ChemGuard Top	1129116	60 x 30 x 30
ChemGuard Top	1495235	48 x 24 x 36
ChemGuard Top	1327440	54 x 24 x 36
ChemGuard Top	1290245	60 x 24 x 36
ChemGuard Top	1307056	60 x 30 x 36

MODELS

MODEL	ITEM #	WIDTH X DEPTH X HEIGHT (IN)
ChemGuard Top w/Bookboxes		
ChemGuard Top w/Bookboxes	672464	48 x 24 x 30
ChemGuard Top w/Bookboxes	672465	54 x 24 x 30
ChemGuard Top w/Bookboxes	672466	60 x 24 x 30
ChemGuard Top w/Bookboxes	1358771	60 x 30 x 30
ChemGuard Top w/Bookboxes	1552593	48 x 24 x 36
ChemGuard Top w/Bookboxes	1298629	54 x 24 x 36
ChemGuard Top w/Bookboxes	1552594	60 x 24 x 36
ChemGuard Top w/Bookboxes	1548588	60 x 30 x 36
Phenolic Resin Top		
Phenolic Resin Top	678246	48 x 24 x 30
Phenolic Resin Top	678247	54 x 24 x 30
Phenolic Resin Top	678248	60 x 24 x 30
Phenolic Resin Top	1129117	60 x 30 x 30
Phenolic Resin Top	1380949	48 x 24 x 36
Phenolic Resin Top	1552586	54 x 24 x 36
Phenolic Resin Top	1411346	60 x 24 x 36
Phenolic Resin Top	1552587	60 x 30 x 36
Phenolic Resin Top w/Bookboxes		
Phenolic Resin Top w/Bookboxes	678249	48 x 24 x 30
Phenolic Resin Top w/Bookboxes	678250	54 x 24 x 30
Phenolic Resin Top w/Bookboxes	678251	60 x 24 x 30
Phenolic Resin Top w/Bookboxes	1552595	60 x 30 x 30
Phenolic Resin Top w/Bookboxes	1552596	48 x 24 x 36
Phenolic Resin Top w/Bookboxes	1552597	54 x 24 x 36
Phenolic Resin Top w/Bookboxes	1552598	60 x 24 x 36
Phenolic Resin Top w/Bookboxes	1552599	60 x 30 x 36

MODELS

MODEL	ITEM #	WIDTH X DEPTH X HEIGHT (IN)
Epoxy Top		
Epoxy Top	657679	48 x 24 x 30
Epoxy Top	657680	54 x 24 x 30
Epoxy Top	657681	60 x 24 x 30
Epoxy Top	1129118	60 x 30 x 30
Epoxy Top	530362	48 x 24 x 36
Epoxy Top	1129121	54 x 24 x 36
Epoxy Top	530363	60 x 24 x 36
Epoxy Top	1326057	60 x 30 x 36
Epoxy Top w/Bookboxes		
Epoxy Top w/Bookboxes	672467	48 x 24 x 30
Epoxy Top w/Bookboxes	672468	54 x 24 x 30
Epoxy Top w/Bookboxes	672469	60 x 24 x 30
Epoxy Top w/Bookboxes	1491585	60 x 30 x 30
Epoxy Top w/Bookboxes	1552600	48 x 24 x 36
Epoxy Top w/Bookboxes	1552601	54 x 24 x 36
Epoxy Top w/Bookboxes	1357718	60 x 24 x 36
Epoxy Top w/Bookboxes	1552602	60 x 30 x 36

TABLETOP TYPES



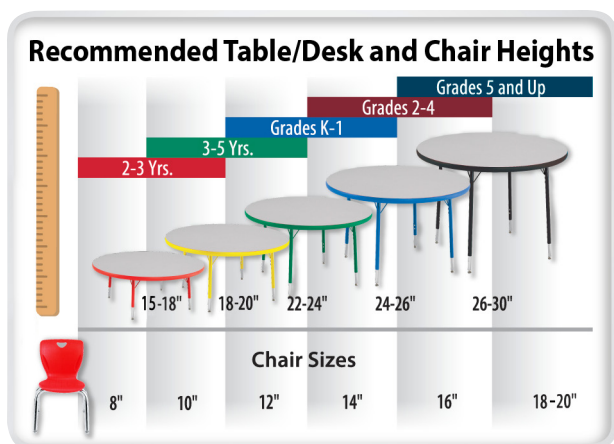
ChemGuard Top



Epoxy Top



Phenolic Resin Top



PRODUCT CERTIFIED
FOR LOW CHEMICAL
EMISSIONS:
UL.COM/GG
UL 2818