



Sled Base Chair



Features

Seat:

- One-piece, injection-molded, polypropylene shell with even color and subtle texture
- Shell and tubular steel frame is ergonomically designed to offer upper back and lumbar support
- Waterfall edge promotes good circulation and relieves pressure points
- 15 contoured ribs provide greater flexibility at the upper back while supporting the lower back
- Convenient integral handle in the upper back for easy carrying
- Unique molded indentations on both sides of the chair permits chairs to be stacked 6 to 8 high without shifting or leaning
- 18"A+ and 20"A+ styles offer a wider, more accommodating seat size.
- Optional seat and back pads are available on 18"A, 18"A+ and 20"A+ chairs

Frame:

- Frame is a sled base design formed from 3/4", 16-gauge, steel tubing
- Steel tubing runs from front to back of the seat with radius corners on front and rear for ease of sliding on carpet
- Seat supports are die-formed from two 14-gauge steel support braces with a continuous weld to conceal seat rivets
- Choose from nickel-chrome plated or black powdercoat finishes
- Available in 5 seat heights with or without felt glides
- An optional field installed book basket is available for 18"A, 18"A+ and 20"A+ chairs in nickel-plated chrome or black powdercoat finish

Specifications

Model	Shell Size	Seat Height	Chair Height	Seat Width	Seat Depth	Frame Width	Frame Depth
20"A+ Sled Base Chair	Extra Wide	20"	34.75"	16"	17"	20"	22.75"
18"A+ Sled Base Chair	Extra Wide	18"	33.5"	16"	17"	19.5"	21.5"
18" Sled Base Chair	Standard	18"	32"	15"	16"	19.5"	21.5"
16" Sled Base Chair	Medium	16"	27.5"	13"	13.5"	17.5"	19.5"
14" Sled Base Chair	Small	14"	25.5"	11.5"	12"	16.5"	16.5"



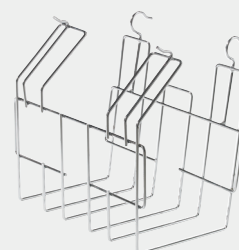
Features



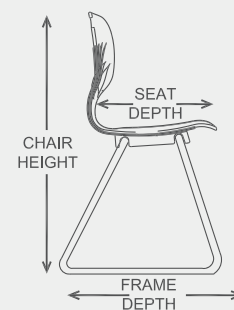
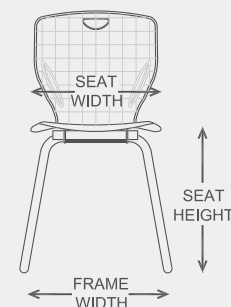
Convenient Handle Makes Rearranging Classroom Seating Easier



Seat Includes 15 Contoured Ribs to Provide Flexibility and Added Strength



Field Installed Wire Book Basket

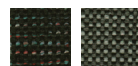


Seat Colors



Black Gray Navy Blue Burgundy Hunter Green Royal Blue Red Green Yellow

Padded Seat & Back Colors



Black Black Marble

Only available on 18"A, 18"A+ and 20"A+ chairs

Frame Colors



Black Chrome



Furniture & Equipment

Visit us at www.ClassroomSelect.com or call 1-888-388-3224



PRODUCT CERTIFIED FOR LOW CHEMICAL EMISSIONS: UL.COM/GG UL 2818